

Ice Machines – A Big Water Star Candidate!

- These ice machines harvest ice at a rate ranging from 250-lb/24 hrs to 1400 lb/24 hrs and typically represent about 10% of the overall commercial refrigeration energy.



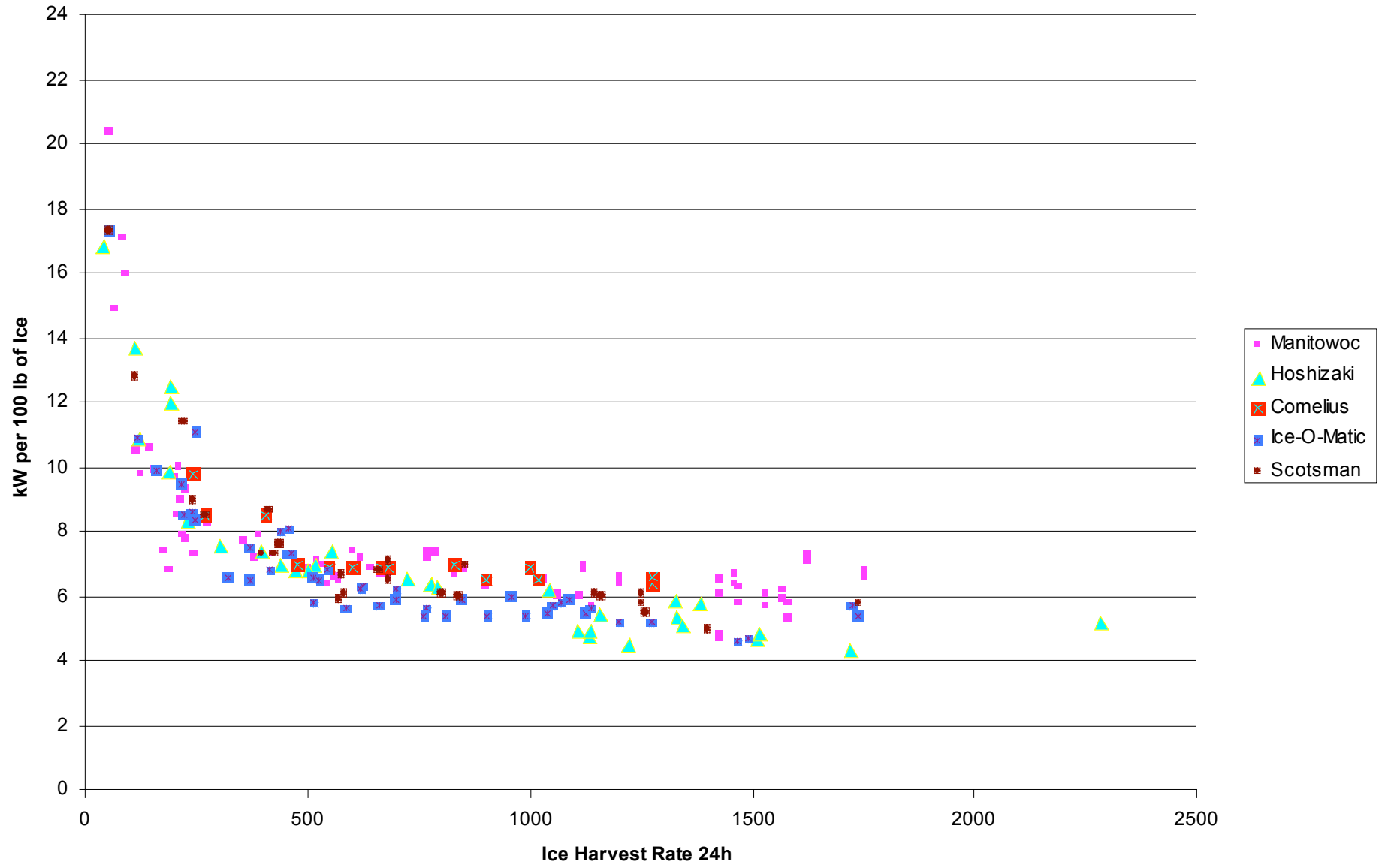
ARI Ice Machines Database

- Air-Conditioning & Refrigeration Institute (ARI)*
- Ice harvest (lb/24 hr)
- Water usage (gal/100 lb ice)
- Energy consumption rate (kWh/100 lb ice)
- Condenser water usage (gal/100 lb ice)

*(www.ari.org/directories/acim/)



Air-Cooled Models



ARI - Air-Cooled Models

